



**OWNER'S MANUAL**  
Lithium Battery Pack  
12.5Ah & 20Ah



**OSET Corp**

425 Kristen Ct, Unit 4  
Montrose, CO 81401, USA  
303 990-2390

[osetbikes.com](http://osetbikes.com)

[info@osetbikes.com](mailto:info@osetbikes.com)



12.2018

INS022922





### NO LIQUIDS NEAR CHARGER PLUG

OSET batteries must be charged indoors, in an open space which is well ventilated.



### DO NOT SPRAY WITH WATER

Do not clean the battery with water under pressure. Such as a hose, jet wash, power washer or steam cleaner. Do not immerse battery in water.



### DO NOT TOUCH OR SHORT ELECTRICAL CONTACTS

Failing to adhere to this can lead to injury and cause irreparable damage to the battery .



### DO NOT DISASSEMBLE

Your OSET battery is not a serviceable item, opening the casing will invalidate your warranty.



### DO NOT EXPOSE TO OPEN FLAMES

Exposing to open flames will result in damage to the unit leading to possible injury.



### DO NOT USE IF BATTERY IS DAMAGED

If the casing of the battery is damaged call OSET for assistance.



### ENSURE CHARGER IS DISCONNECTED FROM BIKE BEFORE RIDING.

Failure to do so can cause injury and harm to the rider and others



### READ INSTRUCTIONS BEFORE USE

Keep instructions for future reference.

- Do not drop the battery or subject it to harsh impacts. This could lead to damaging the pack, shortening its life and risk fire.
- Remove the battery from the bike before any maintenance or cleaning.
- Do not store metal objects near the battery, a short circuit could lead to permanent damage and risk of fire.
- Keep the battery away from heat sources and sunlight.
- Do not clean the battery with water under pressure. Such as a hose, jet wash, power washer or steam cleaner. Do not immerse battery in water.
- If the battery is mistreated and fumes escape move to fresh air and seek medical advice.
- The battery is designed to exclusively work with your OSET electric bike. Any other use is forbidden and could result in injury.

## BATTERY DISPOSAL

Over time your lithium battery packs capacity will reduce, until it reaches the end of its service life. This is perfectly normal and to be expected.

Battery packs contain a large amount of valuable raw materials & plastics which can all be recycled if disposed of correctly. Do not dispose of the battery with general household waste.



Under the Waste Battery Regulations , OSET offers to take back free of charge, batteries that have come to the end of their life for treatment and recycling.

If you require us to take back a battery please contact us on [info@osetbikes.com](mailto:info@osetbikes.com).

Lithium batteries are hazardous goods, do not post through normal freight services.

---

WEEE Producer Environment Agency Reference Number: WEE/MM4649AA

WEEE Compliance Scheme Registration Number: CD01/00956

Battery Producer Environment Agency Reference Number: BPRN06922

Battery Producer Compliance Scheme Registration Number: BBCE193

---

Great Britain

#### OSET Bikes Ltd

Units 5-6, Highfield Business Park

Sidney Little Road

Saint Leonards-on-Sea

East Sussex TN38 9UB

01424 834440

[www.osetbikes.co.uk](http://www.osetbikes.co.uk)

[info@osetbikes.co.uk](mailto:info@osetbikes.co.uk)

United States of America

#### OSET Corp

425 Kristen Ct, Unit 4

Montrose

CO 81401

USA

303 990-2390

## TRANSPORT

Due to the capacity of the OSET lithium battery it cannot be shipped via normal freight services, it must be transported as dangerous goods by professionals. Obtain information on the current valid regulations when transporting the battery. Please contact OSET for more information.

If transported in a vehicle ensure adequate precautions are taken;

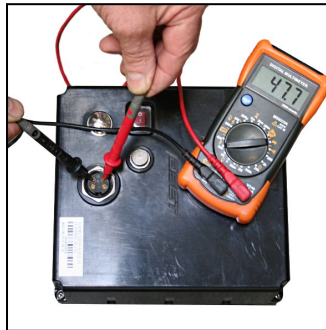
- Ensure battery is secure in the vehicle and isolated.
- Do not place battery in the passenger compartment of the vehicle.

## TROUBLESHOOTING

OSET recommend using a 'multimeter' to monitor the health of the battery. You will be able to easily and instantly see the charge of the battery.

In order to test the battery voltage using a multimeter, connect the negative & positive probes to a pair of pins on the discharge port on the battery as shown.

When testing the battery voltage, you should have a reading of between 36.0 & 54.4V depending on the state of charge of the battery. If you read anything outside of this range, please disconnect the battery immediately and contact your OSET dealer, importer or OSET customer services.



ISSUE	LIKELY CAUSE	SOLUTION
Charger LED is not illuminated.	Blown plug fuse. Faulty power lead.	Check fuse and replace if faulty. Replace lead if required.
Charger LED doesn't turn green.	Battery still charging.	Allow battery to continue charging.
Battery switch flashing red. 1 long 2 short.	Battery over discharged.	Fully charge battery.
Battery switch flashing red. (Other than 1 long 2 short.)	Fault with battery.	Contact your OSET dealer.
Charger LED Red	Battery fully charged Battery not connected	Use battery Connect to battery

Should the table above not solve your query please contact OSET customer service noting the battery serial number. This can be found on the sticker on the side of the battery.

## OPERATING INSTRUCTIONS

Thank you for choosing this OSET lithium battery pack, we hope it provides you with many hours of fun riding.

Every pack we produce is subject to strict testing and quality checks. Nevertheless the service life of the pack is dependent on how it is used, stored and maintained. The battery is only intended to be used by adults or those that have suitable experience and knowledge.

Please take a moment to become familiar with these operating instructions before using the battery as the more care you take of the pack, the longer it will provide you with reliable service. The OSET lithium battery pack is designed & intended for use **only** with OSET bikes. The user bears responsibility for any damage caused by inappropriate use or incorrect storage.

We recommend charging the battery fully after every use, no matter if it was fully discharged or not, it is safe to charge the battery at any time. For more information on charging please see the charging section.

**DO NOT** try to modify or change the battery pack in any way. For technical assistance contact OSET or your local OSET dealer.

Do not clean the battery with solvents or chemicals that may impact surfaces.

## PROPER USE & BEST PRACTICE



- In order to use the bike, first the battery must be connected to the main power lead on the bike's wiring harness. See your bike manual for specific information on this. Connect the bike's power lead to the main discharging port on the battery (A). Ensure the threaded plug is tightened **securely**.
- Switch the battery on before use (B). To turn the battery on press the power button once. The button will now be backlit green. To turn the battery off simply press the same button, the button will flash and then turn off.



### NOTE

If the battery is not used for 2 hours, it will revert to a *power saving mode*. You will need to turn the battery on again before it can be used if it is in this mode.

## CHARGING

 <b>CAUTION</b>
<p>Do not block the fan vent on the charger while charging the battery. This can cause the charger to overheat.</p>
 <b>WARNING!</b>
<p><b>Use only the battery charger supplied.</b> Using any other battery charger will void your warranty, may damage the batteries and could cause a fire that may result in property damage and/or possible injury.</p>

Fully charge the batteries before using your OSET electric bike for the first time.

To charge the battery:

- 1) It is good practice to disconnect the discharging lead of the bike first. Now remove the water resistant threaded cap for the charge port and connect the charging lead to the battery. (C).
- 2) Connect the charger to the mains power supply & turn on at the wall socket. The battery button will illuminate green.
- 3) The LED on the charger will illuminate orange, showing the battery is charging. Once this LED turns to green, the battery is fully charged & the charger can be unplugged. The button on the battery will flash green whilst it is charging.

Warning ensure charger is disconnected from battery before riding

The maximum charging time for one charging cycle is **10 hours**. After this time the charger will stop charging & the red LED will flash. It is safe to unplug & reconnect the charger at any time.

It is recommended that you fully charge the battery before & after every ride and that batteries are never left in a discharged state for an extended length of time.

**Note:** The battery will enter a 'Low Voltage Protection' mode if the voltage drops too low. If the battery voltage falls this low, please charge the battery fully within 24 hours, to prevent the cells deteriorating.

If the battery voltage falls below 36V, this indicates there is a significant fault with the battery pack. Please **do not** attempt to charge a battery with a voltage this low.

If the battery flashes red at any point please contact your local dealer or OSET bikes customer services.

**Always** connect the charger to the battery before connecting the charger to the AC power source.

**Always** disconnect the AC power source from the wall socket before disconnecting the charger from the bike.

## SPECIFICATION

Capacity	12.5Ah	20Ah
Voltage	46.8V Nominal	46.8V Nominal
Watts	585 Wh	936 Wh
Weight	5.1Kg	7.2Kg
Size	210x190x160mm	210x190x160mm
Charging	Standard charging <5 hours Fast charger<3.5	Standard Charger < 8 hours Fast charger < 4 hours
Colour	Grey	Black

## STORAGE

In order to prolong the battery packs service life, it is vital the battery is stored correctly.

- Take care when handling the battery, strong impacts will permanently damage the unit.
- Please store the battery above 48V & turned '**off**'.
- Please check the battery voltage is greater than 46v **every 3 months** to avoid over discharging and permanent cell damage.
- Store the battery in a **cool** & dry place, (0-30°C).
- **Avoid** lifting the battery by either the charging or discharging plugs.
- When not in use, we recommend you replace the caps to cover the battery packs charging, discharging & diagnostic ports.
- If the battery is in storage for an extended period of time It may be necessary to charge and discharge the battery multiple times to get back performance.

